

Backup using LifeLine•DVD

Microsoft Server 2000 and 2003

Microsoft Active Directory

A central component of Windows server 2000 and 2003, Active Directory centrally manages many of the resources that make up the network environment. The following instructions illustrate one strategy to back up Microsoft Active Directory running on Windows Server 2003. In this example the latest version of the Active Directory database is automatically backed up by LifeLine•DVD. Because the operation of LifeLine•DVD is completely independent of other computers on the network, the information in Active Directory is available at any time, no matter the condition of the original Windows server computer.

Important Notes:

- ***It is the responsibility of the user to determine the suitability of the information in this document to the user's environment.***
- ***The information contained in this document describes the use of software that was not created by Backlot Technologies. As a result, Backlot Technologies cannot be responsible for the operation of this software.***
- ***Perform all steps below from the Administrator or other fully privileged account.***

Step 1

Identify an account with full (administrator) privileges that will be used to extract information from Active Directory.

You may use an existing account or create a new account to be used to extract information from Active Directory. In either case, the account ***must*** have administrator privileges. We recommend that you create a new account (for example, "LifeLine") with ***domain administrator privileges***, such that it can access all the computers on the network.

You will use the privileged account as the user account in Step 4 (*Create and schedule backup tasks*) of this document. If the account has domain administrator privileges you can also use it as the single account to enter in the LifeLine•DVD Graphical User Interface (GUI) to gain access to all the information on your network to be backed up.

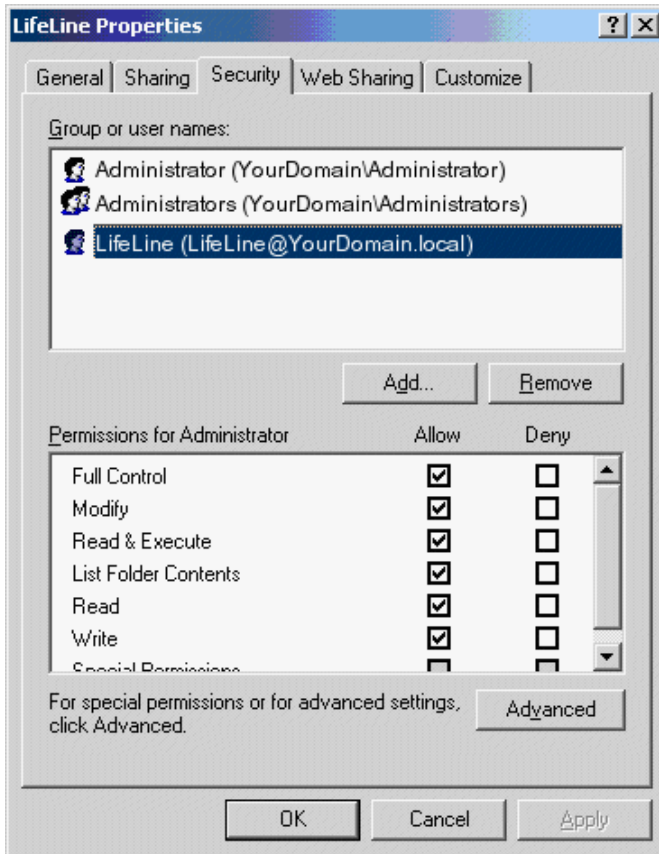
Step 2

Create a shared folder that will be used as a staging area to temporarily contain the extracted information.

Create a folder structure in a suitable location on the server. The folder structure should be created as follows:

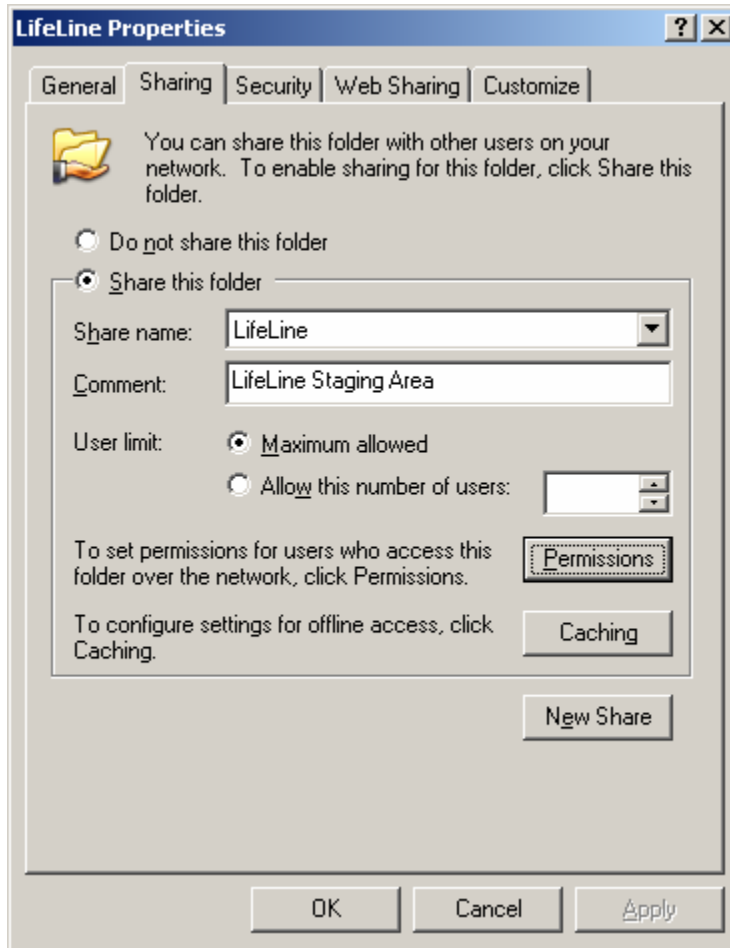
```
C:\LifeLine
  Active Directory
```

Your backup user account (from Step 1) should be granted full access permissions to this folder and **only** administrators (and backup operators) should have permission to access this folder. In the following graphic the Administrator accounts and a newly created LifeLine account have been given access to the LifeLine folder.



Every night a file named C:\LifeLine\Active Directory\CSVDE_Export.csv will be created which contains the entire contents of the Windows Active Directory. Every night LifeLine•DVD will back up this file.

Finally, the LifeLine folder structure should be selected as a **shared folder** (using default permissions).



Step 3

Exporting Microsoft Windows Server Active Directory Information

[This information is provided for completeness; no actual user steps are required.]

The Microsoft application CSVDE is used to export full information from Active Directory. CSVDE can also be used to import information to Active Directory as part of your recovery process. The exact steps used in recovery depend on the problem from which the business is recovering and are beyond the scope of this document.

Application: CSVDE.EXE
Location: Windows/System32

Useful references:

http://www.computerperformance.co.uk/Logon/Logon_CSVDE.htm

<http://technet2.microsoft.com/WindowsServer/f/?en/Library/1050686f-3464-41af-b7e4-016ab0c4db261033.mspx>

Step 4

Create and schedule backup task

Use the Windows Task Scheduler to create the task that will extract information from Active Directory. Be sure the task is configured to run by the fully privileged account (e.g. LifeLine). Use the following information as a guide, but be sure to modify the folder paths and start time to suit your needs.

Scheduled Task

<u>Time</u>	<u>Frequency</u>	<u>Run</u>	<u>Extract Data From:</u>	<u>Function</u>
12:01 AM	Daily	CSVDE	Active Directory	Extract data from Active Directory to a file

Scheduled Task Command Line

Command Line

```
C:\WINDOWS\system32\csvde.exe -f "D:\LifeLine\Active Directory\CSVDE_Export.csv"
```

Step 5

Schedule LifeLine•DVD to backup the extracted data

Last, but most importantly, configure your LifeLine•DVD Intelligent Backup Appliance to perform a timed backup (for example, at 1:00 AM) of the shared LifeLine folder on your server.

Some Additional Notes and Reminders

1. Remember to perform all the steps in these instructions from the Administrator or other fully privileged account.
2. Test your implementation by accessing the Task Scheduler and manually running the task (right click on the task). Confirm that a new extract of the Active Directory database is created in the shared LifeLine folder.